



Ergosoft Roland DG Edition 3

Update Ergosoft Roland DG Edition 2 to 3



Ergosoft Roland DG Edition 2 to 3 Updating Procedure

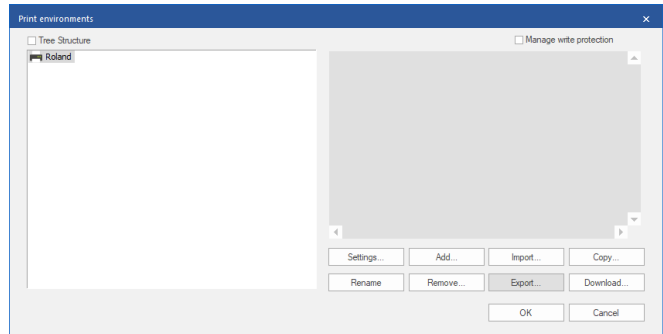
Updating from an earlier version of a RIP to a more recent one can seem like a daunting task, but with the following steps you can easily take over your printer configurations and settings from Ergosoft Roland DG Edition 2 to Ergosoft Roland DG Edition 3.

It is recommended to do the following steps in order, but you can skip the steps that don't apply to you.

Exporting Print Environments from Ergosoft Roland DG Edition 2

First, open your installation of Ergosoft Roland DG Edition 2 and open the *Print Environments...* Dialog (*Tools > Print Environments*).

Select the *Print Environments* you want to take over. You can select multiple *Print Environments* by holding Ctrl or Shift, then click the *Export* Button.



Select a Save path and confirm. If you selected one Print Environment, you'll get a *.PrEnv* file. If you selected multiple, you'll get a *.PrEnvPck* file bundling your Print Environments.

If you also want to take over *Cut Environments*, repeat this process for the *Cut Environments* (*Tools > Cut Environments...*).

Next, install Ergosoft Roland DG Edition 3 on your system. If you already have it installed, go directly to the next step. If you need help setting up Ergosoft Roland DG Edition 3, check the [Ergosoft Roland DG Edition 3 Installation Guide](#).

Leave Ergosoft Roland DG Edition 3 closed for now, as we first want to import some files.



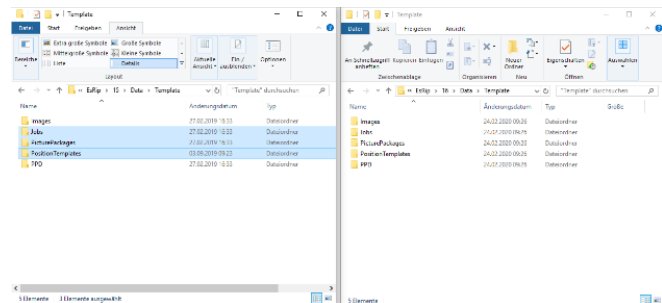
Importing Saved Jobs, Picture Packages, Position Templates

If you have created *Position Templates* in Ergosoft Roland DG Edition 2 that you would like to keep using in 3, you can take over the relevant files by directly copying them from the User Data folder.

By default you can find the User Data folder in *C:\Users\Public\Documents\EsRip* with subfolders for 15 (Roland DG Edition 2) and 16 (Roland DG Edition 3).

To take over saved Jobs, Picture Packages and Position Templates, go to the folder *15/Data/Template* and copy the subfolders *Jobs*, *PicturePackages* and *PositionTemplates* to the corresponding folder in *16/Data*.

Since this is a new installation, you can always integrate/overwrite the existing folder when prompted.



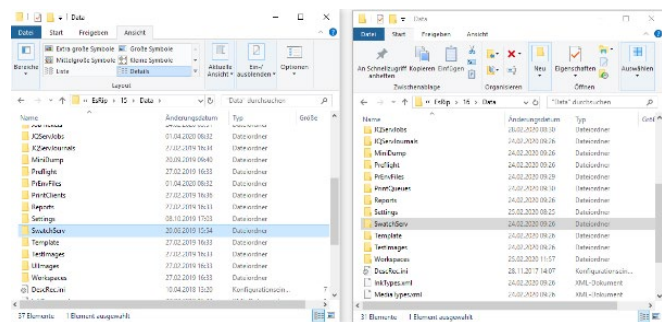
Importing Swatchbooks

If you have created *Swatchbooks* in Ergosoft Roland DG Edition 2 that you would like to keep using in 3, you can take over the relevant files by directly copying them from the User Data folder.

By default you can find the User Data folder in *C:\Users\Public\Documents\EsRip* with subfolders for 15 (Roland DG Edition 2) and 16 (Roland DG Edition 3).

To take over Swatchbooks, copy the *SwatchServ* folder from the User Data folder of Version 2 *15/Data/* to the corresponding folder in *16/Data*.

Since this is a new installation, you can always integrate/overwrite the existing folder when prompted.



Importing Input Profiles, Exported Densities, Color Profiles, Named Color Profiles and ColorQPC Sessions

If you used your own input profiles in Ergosoft Roland DG Edition 2 that you would like to keep using in 3, or want to keep external densities, profiles and/or saved *ColorQPC* Sessions you can take over the relevant files by directly copying them from the User Data folder.

By default, you can find the User Data folder in *C:\Users\Public\Documents\EsRip* with subfolders for 15 (Roland DG Edition 2) and 16 (Roland DG Edition 3).

